

TK45 LS

CRAWLER CRANE



 **TEKNOGRC**

TK45 LS / crawler crane



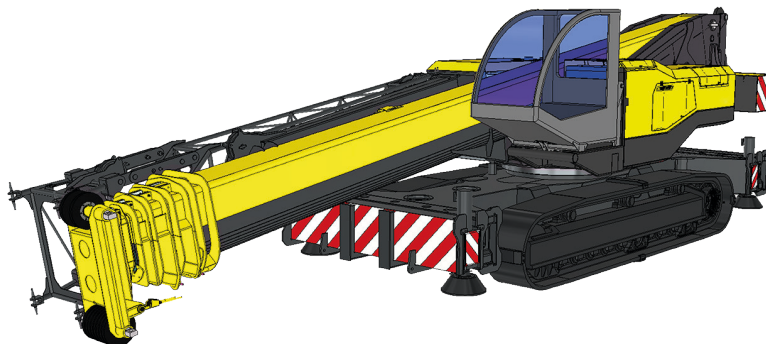
The TK45 LS is a compact crawler crane with an extendable beam stabilization system and independently controlled hydraulic jacks. Its steering wheel, its translation system managed by a Danfoss control unit and its small size allow the operator to maneuver the crane in restricted areas.

The self-levelling hydraulic stabilization jacks are easily operated from the machine. The foldable jib allows the maximum loading height of 51.5 m to be reached, while the tilting cab offers the operator a complete view of the lifted load.

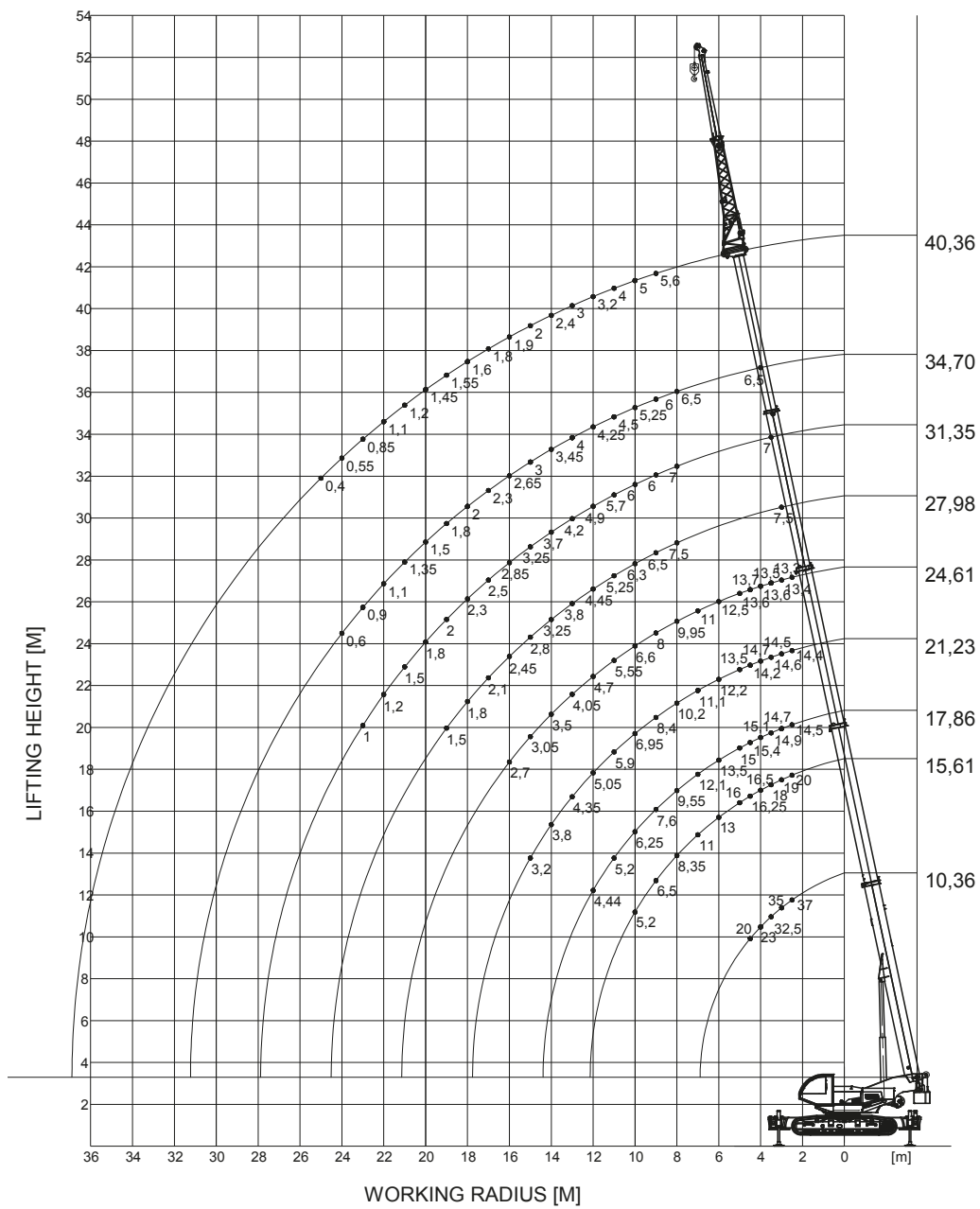
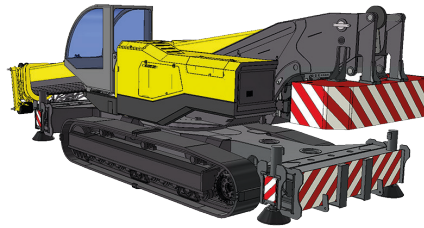
The supplied radio control facilitates loading and unloading of the crane. Modern exhaust gas treatment systems ensure very low emissions.

TK45 LS / crawler crane

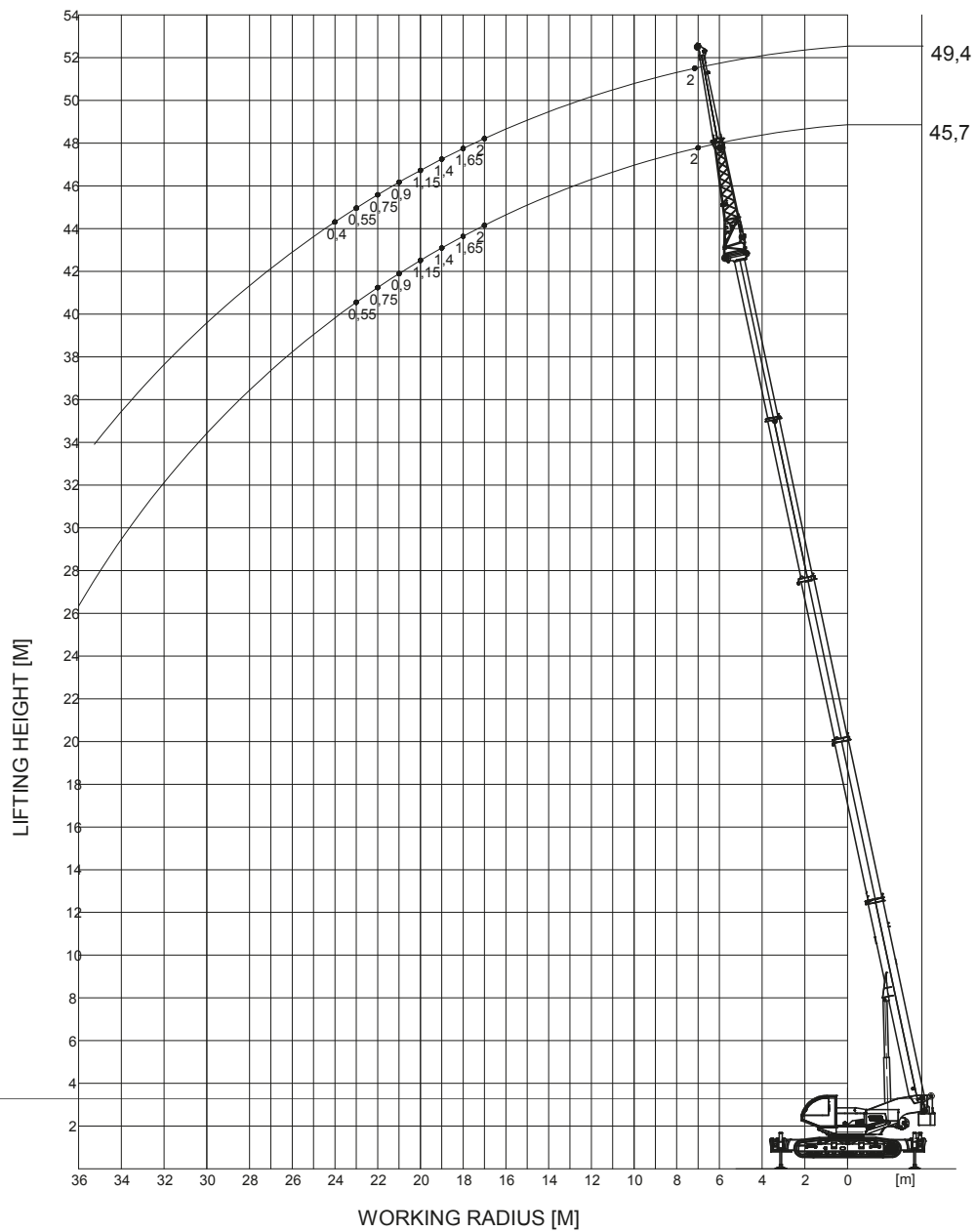
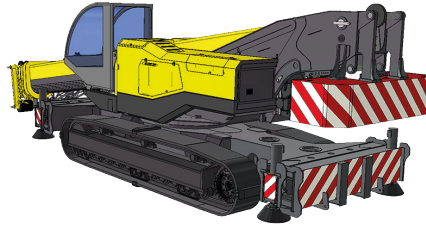
TECHNICAL FEATURES	Maximum load capacity	45	T
	Capacity	45	T
	Maximum lifting height	41.2	m
	Maximum lifting height with jib	51.5	m
OPERATING SPEED	Winch speed	67/154	m/min
	Length and diameter of winch ropes	L 200 Ø 13	mm
	Boom lifting speed	55	s
	Boom extension speed	70	s
	Turret rotation speed	3	r/min
	Maximum speed	4	km/h
CRANE	Maximum slope	87.8	%
	Emissions	EU 2016/1628	
	Total weight	32	T
DIMENSIONS	Total size	11,100x2,550x3,150	mm
	Boom length	40.3	m
	Boom length with jib	50.2	m
	Boom tilt	-2 +80	°



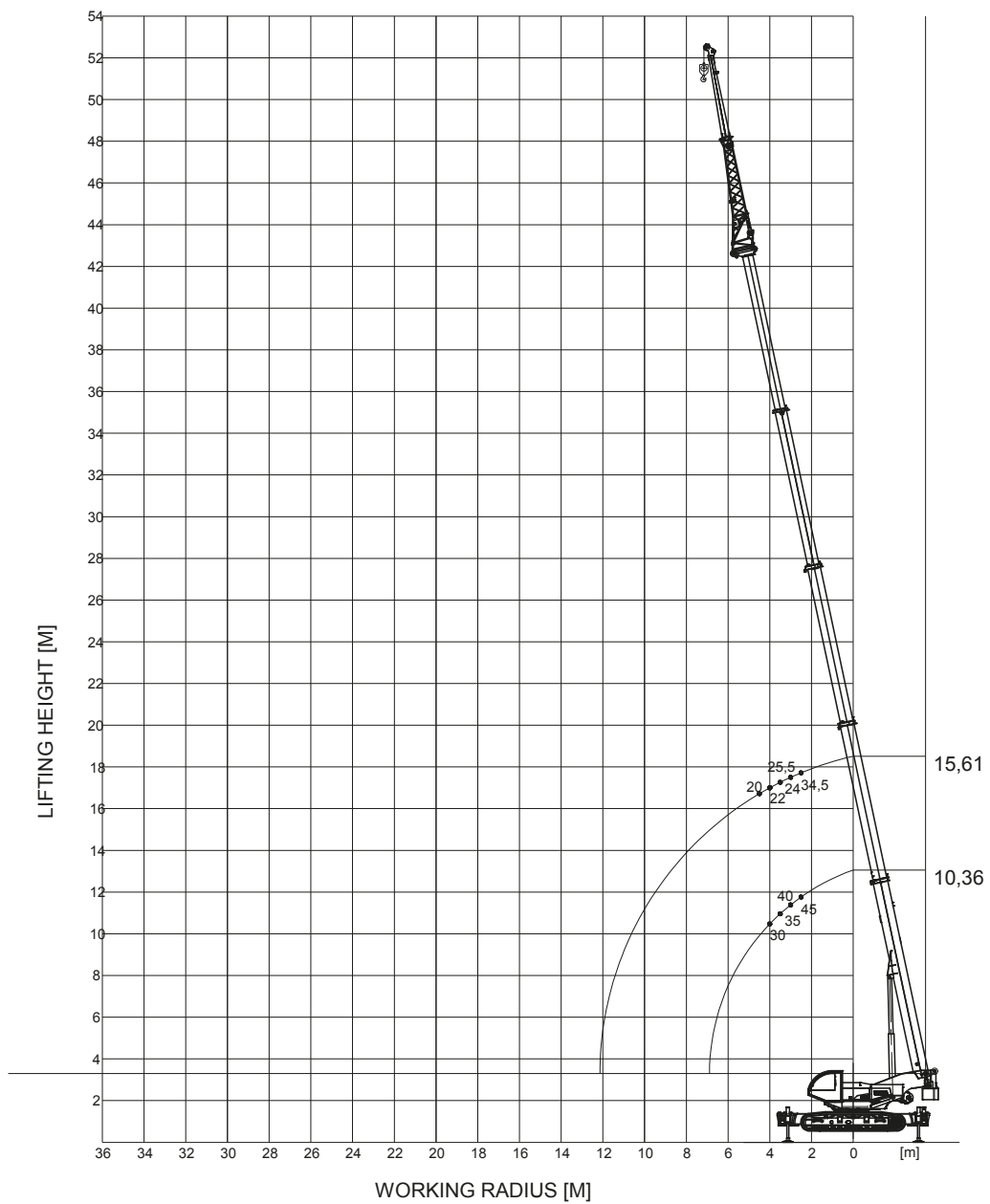
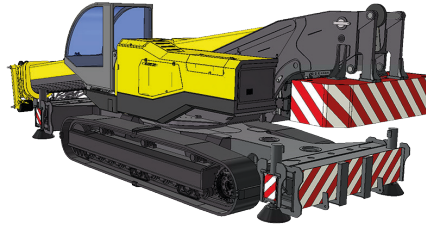
TK45 LS / crawler crane



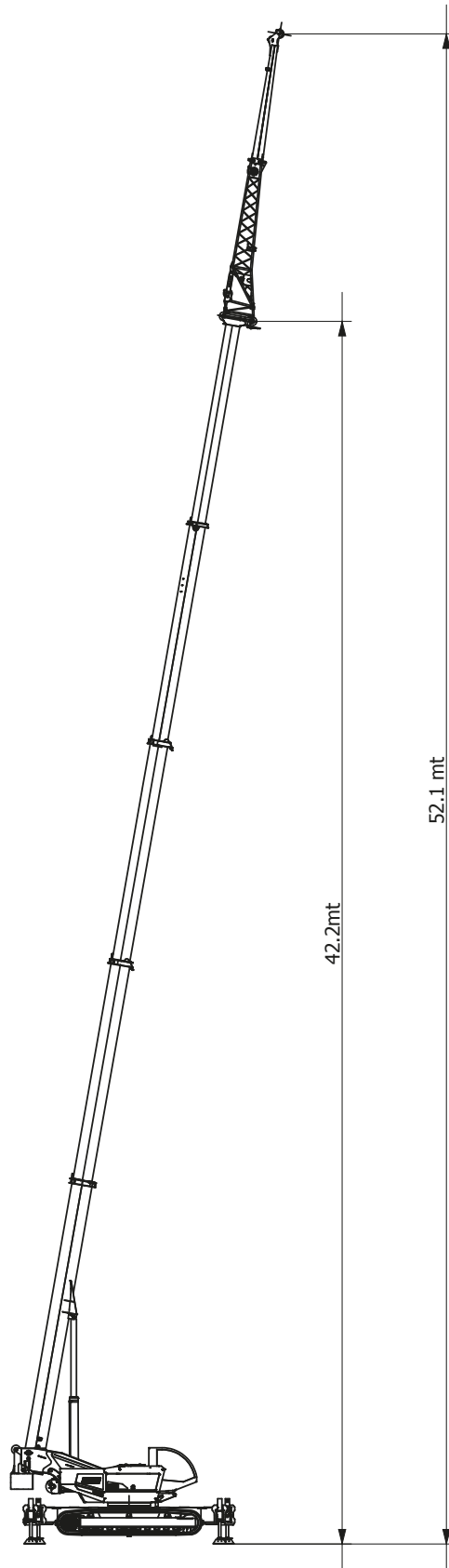
TK45 LS / crawler crane



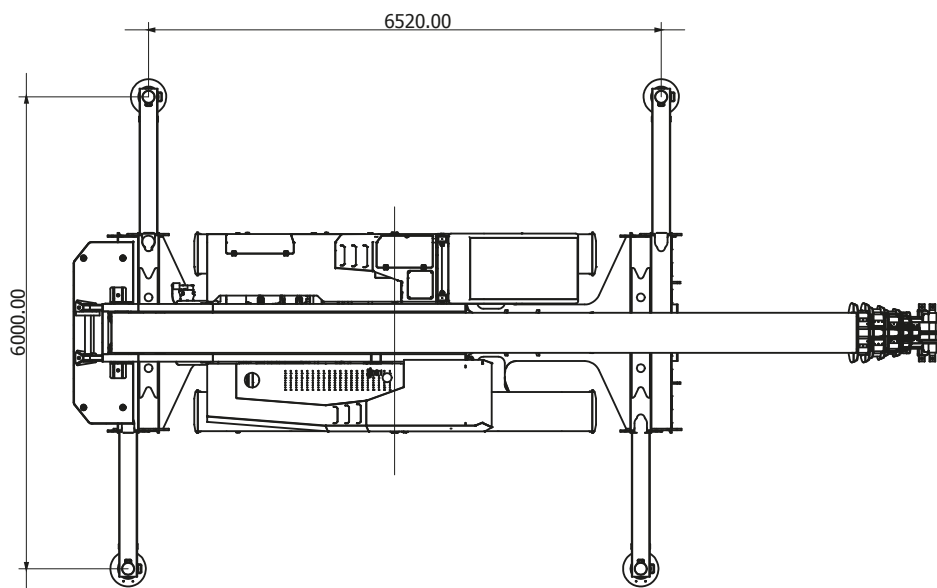
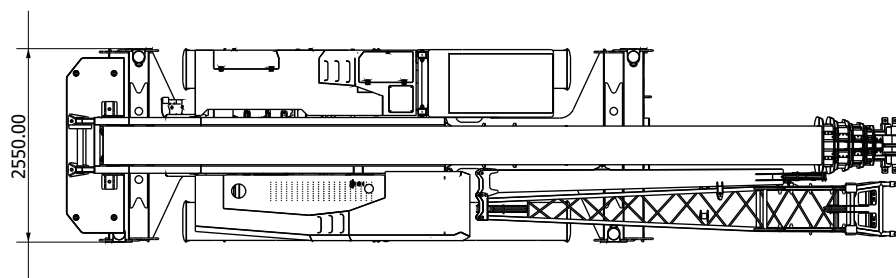
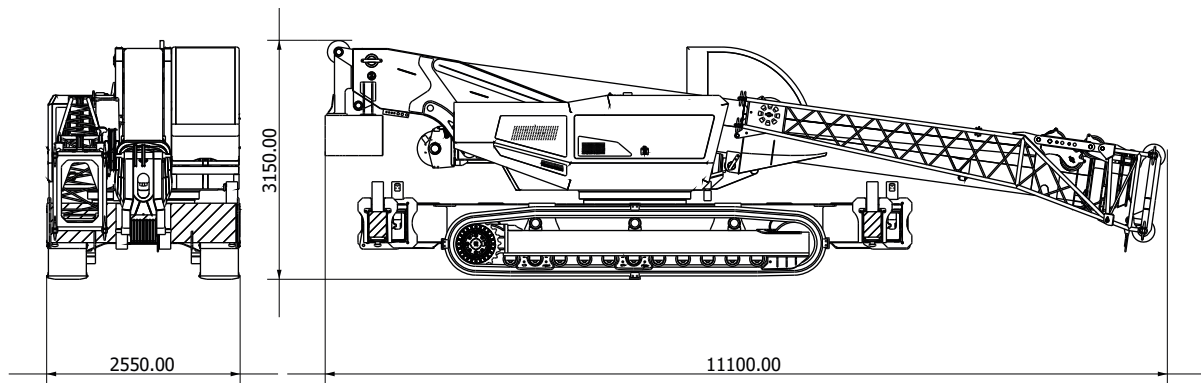
TK45 LS / crawler crane



TK45 LS / crawler crane



TK45 LS / crawler crane



Maximum load capacity	T	45
Maximum lifting height	m	41.2
Maximum lifting height with jib	m	51.5
Winch speed	m/min	67/154
Boom lifting speed	s	55
Boom extension speed	s	70
Turret rotation speed	r/min	3

Maximum speed	km/h	4
Maximum slope	%	87.8
Total weight	T	32
Total size	mm	11,100x2,550x3,150
Boom length	m	40.3
Boom length with jib	m	50.2
Boom tilt	°	-2 +80

TK45 LS / crawler crane

Equipment

Undercarriage	
Undercarriage	Pair of tracked semi-trucks with track width of 500mm. Stabilization with extensible beams and hydraulic jacks, length=6,520 mm and width=6,000 mm.
Translation	Hydraulic drive of the translation managed by a Danfoss control unit. Two pumps and two closed-circuit motors allow it to reach 4 km/h. The machine is equipped with an anti-dumping filter to absorb the oscillations on the pedal and on the steering wheel during the work phase.
Electrical system	CAN Bus data transmission. 24Volt direct current.

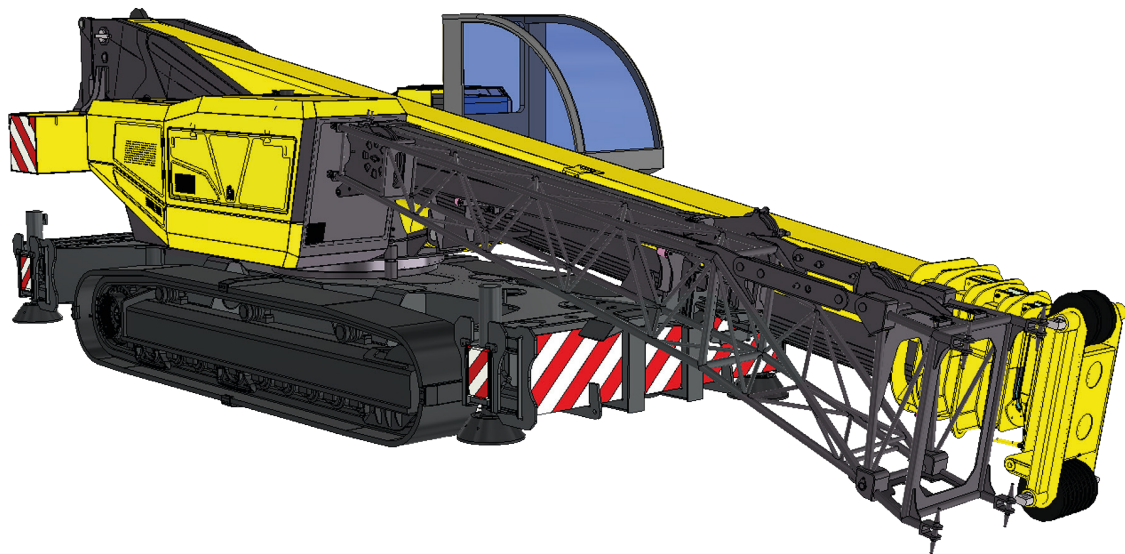
Driving	
Driving	Ergonomic driving with steering wheel and accelerator pedal. Dual Path mode with active counter-rotation. Automatic/manual Park Brake management.
Driver's cab	Cabin tiltable to 30°. Cabin with great visibility, comfortable and equipped with sliding windows. Front and upper glass with wiper. Corrosion resistant paint. Wide visibility for different working conditions.
Comfort	Air conditioning, heating and air suspension seat. Seat belts. Ample lighting of driver's cab.
Radio control	Radio control with remote control for safe loading and unloading of the crane.

Boom	
Telescopic boom	Telescopic in high resistance steel. 1 base element, 1 independent extension and 3 synchronized extensions.
Jib	Inclinable in 3 positions (0°-10°-20°). L= 9,930mm foldable into 2 halves. Can be used in the fully extended version or in the reduced version.
Boom extension cylinder	Single two-stage cylinder.
Boom length	49.7 m
Pick & Carry	Lifting up to 12,000 kg and 4 km/h.

Turret	
Chassis	Anti-torsion welded structure, in high-strength steel.
Rotation	Continuous 360° using axial piston hydraulic motor. Planetary gearbox with internal toothed fifth wheel and double row of balls. Multiple disc negative brake.
Control	Hydraulically operated manipulators with the possibility of simultaneous proportional maneuvers.
Lifting winch	Axial piston variable displacement engine. Lifting drum with integrated planetary gearbox and parking brake with multiple discs. Block valve and descent control. Cable gland to improve the winding of the rope on the drum.
Hydraulic system	Open circuit system with axial piston hydraulic pumps. Proportional hydraulic distributors with load sensing power regulation. Possibility of performing multiple maneuvers simultaneously. Heat exchanger for oil cooling. Oil filtering through 1 cartridge filter on the return circuit.
Stabilization	With self-levelling performed with 4 independently controlled hydraulic jacks. Stabilization system can be operated on board the machine.
Hydraulic oil tank	450 l
Electrical system	24 V power supply. CAN Bus vehicle management network. 2 batteries, each with 143Ah.
Safety devices	Electronic load limiter with indication of boom tilt, boom length, lifted load, maximum liftable load. Limit switches. Safety valves on all hydraulic functions.
Ballast	In a single piece with a weight of 1.5 tons.
Cameras	1 camera located on the rear side to increase visibility during more restricted maneuvers. 1 camera for supervising the winding of the rope on the winch.

Engine	
Engine	Cummins B 4.5 Stage V- Tier 4f- 149 kW@2200rpm.
Diesel tank	300 l
Def tank	38 l

TK45 LS / crawler crane



Optional extras

Rubber pads

Jib

Tilting cabin

2nd winch

Radio control

2 cameras on the right side of the machine for safe movements



PREDISPOSITION FOR OPTIONAL EXTRAS PROVIDED ON DEMAND

TK45 LS / crawler crane



All data, technical characteristics and information reported in this document are for informational purposes and are subject to change without any prior notice requirement. All specifications described do not constitute a guarantee since the performance of the machine varies depending on use.

Machine illustrations may contain optional and additional equipment. The dimensional data refers to average reference measurements indicated for informational purposes only.

The commissioning of the machine and its correct use require compliance with the use and maintenance manual.

The weights of hooks, blocks and all lifting accessories are part of the load and must be deducted from the loads indicated.

Please contact TeknoGRC for more information regarding optional and additional equipment.



TEKNO GRC srl

via Vecchia Fornace, 31
24050 Bariano (BG) - ITALY

0363 958311
info@teknogrc.it
www.teknogrc.it